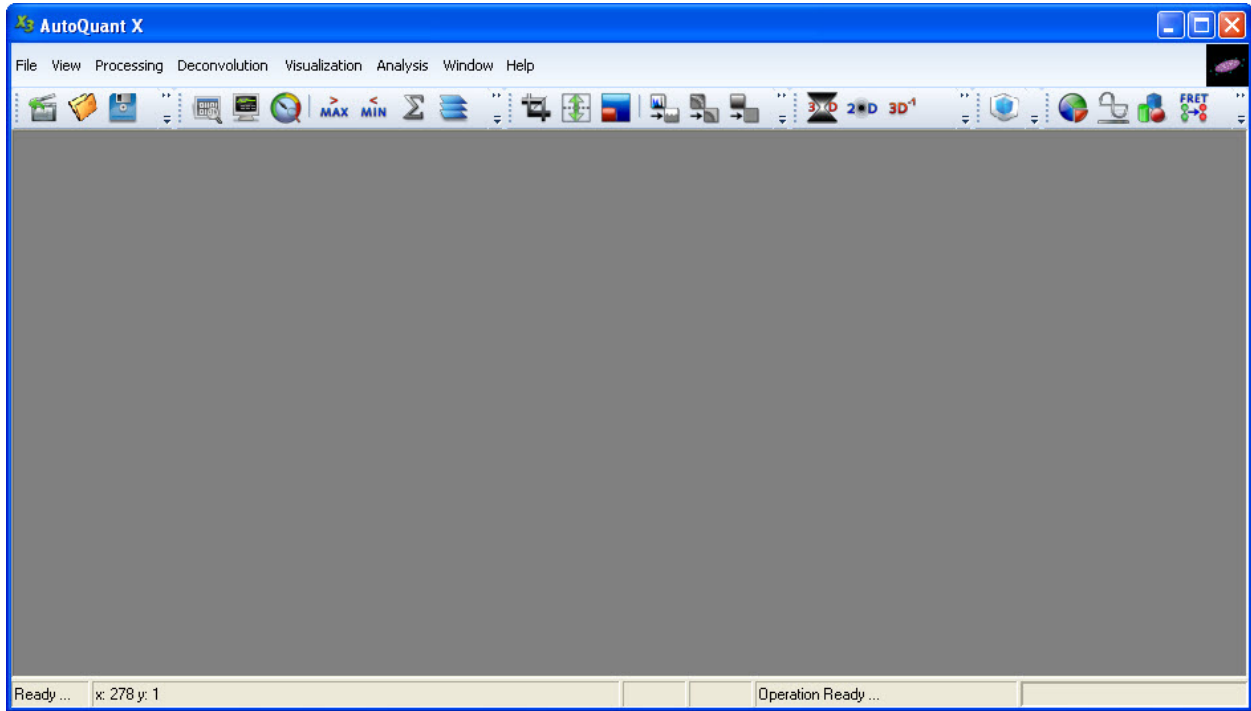


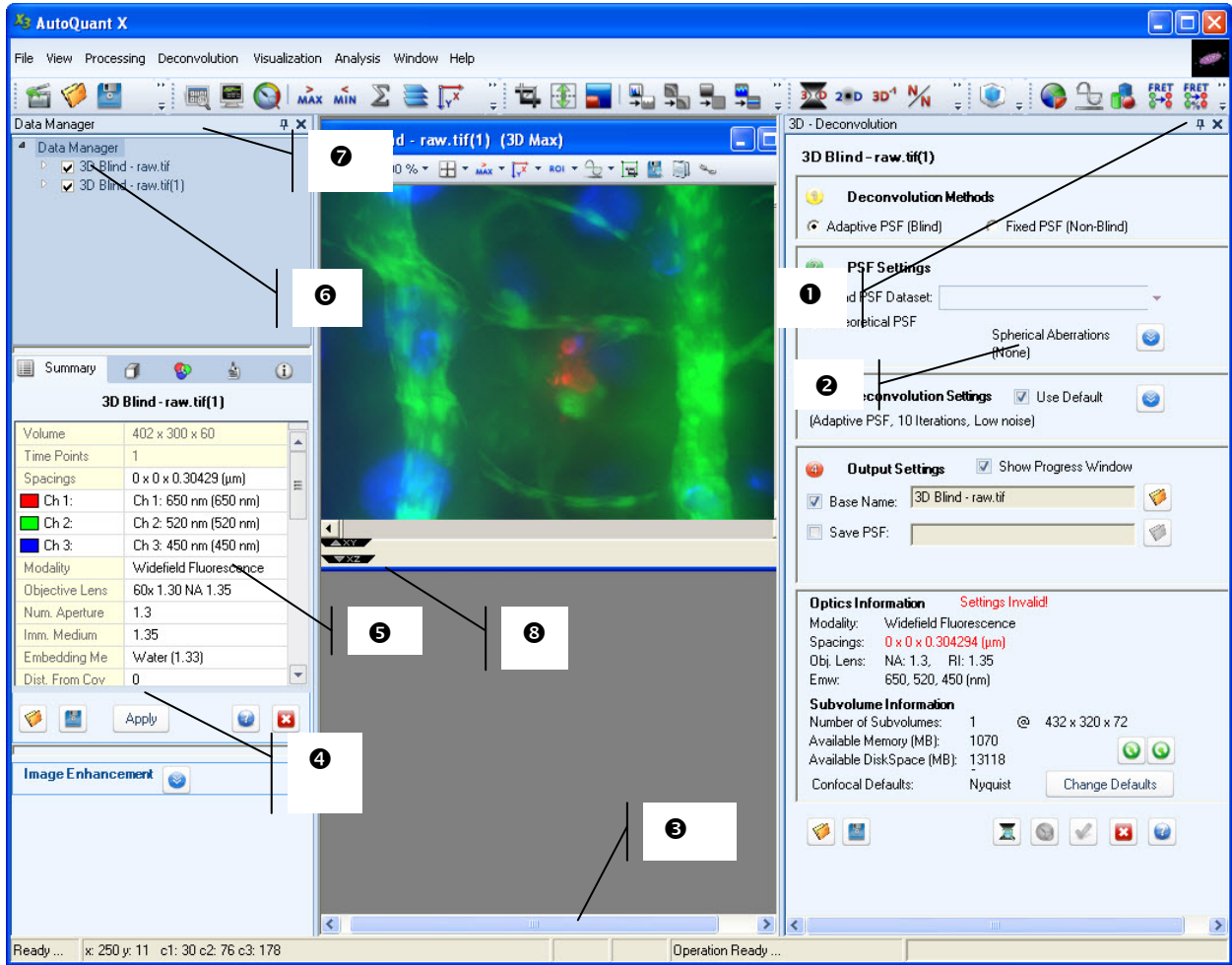
AutoQuant X3 Quick Start Guide

User Interface


This section explains the user interface for the software; it describes what is in each section and how to use it. More detailed explanations can also be found in the online help that is included with the product. When you first start AQX 3, the user interface will look like this:




Once you have opened a dataset, the user interface will look something like this:



Starting at the top, and moving clockwise, the features indicated are: 1) Docking Controls, 2) Dialog Box, 3) Status Bar, 4) Image Enhancement Dialog, 5) Data Properties, 6) Data Browser, 7) Data Manager, and 8) Perspective tabs. Each item will be explained below.

1) Docking Controls - There are two icons in the Docking Controls section. The tack  controls whether the dialogs display all the time. Once the icon is clicked, the tack will appear horizontally,

 and the dialog will remain open only as long as the mouse is held over it. Once the mouse moves away from the dialog, the dialog will slide closed. It can then be reopened by placing the mouse over the tab for that dialog, located along the side of the application window. The default for the tack icon is vertical (open at all times).

The other icon in the Docking Controls is the Close icon .

Clicking this icon will close the dialog. The Data Browser dialog can be reopened by going to *View->Data Browser*. Depending on which dialog was open on the right side, the dialog can be reopened from its source menu (e.g. the 3D Deconvolution menu would be opened by going to *Processing-3D Decon*).

2) Dialog Box - The Dialog Box appears on the right side of the application window, and is opened either via a menu item or a toolbar icon. If there are multiple dialogs open (e.g. 3D Decon, 3D Viewer, and Statistics, a tab will appear for each of the open dialogs. If they are docked (always displayed, with a vertical tack icon) the tabs will appear at the bottom of the dialog box. If they are not docked (not displayed all the time, with a horizontal tack icon) the tabs will appear along the right side of the application window. Clicking on these tabs will display the tab that has been clicked on.

3) Status Bar - The Status Bar displays the status of all open operations in the application window. Any operation can be displayed with a click.

4) Image Enhancement Dialog - The Image Enhancement dialog contains the controls to adjust the maximum and minimum intensities (by moving the red and orange triangle sliders at the bottom of the graph) and the gamma by either entering a value into the textbox labeled *Gamma* or by adjusting the green triangle slider at the bottom of the graph.

5) Data Browser - The left side of the application window contains the Data Browser, in which is contained the Data Manager, Data Properties and Image Enhancement Dialog. The Data Browser can be docked or undocked as described in the Docking Controls section above.

6) Data Properties - The Data Properties section contains the image information for the selected dataset. Included in this information are the image dimensions, image spacings, channel information, number of slices, modality information, as well as space to enter notes on the dataset.

7) Data Manager - The Data Manager section displays the opened datasets in a file tree format. With multiple datasets open, the active dataset can be selected by clicking on that dataset in the Data Manager (or by clicking on the dataset display in the application window). Additionally, the display of a dataset can be adjusted by selecting or deselecting channels, slices, and or time points to be displayed. This can be done by clicking on the box next to each channel, time point or z-slice. If there is a green check, that item will be displayed, if there is no green check, it will not be displayed.

8) Perspective Tabs - These tabs, located along the right side and bottom of the image display window open new perspectives of that dataset within the same image display window. The tab along the right side opens and closes the YZ perspective, and the tabs along the bottom open and close the XY and XZ perspectives. Clicking on one of these tabs will open that tab's perspective. Once opened, clicking on that tab again will close that perspective.

The toolbar along the top of the application window provides shortcuts to several commonly used functions. These will be shown below as they appear on the toolbar, from left to right.



File Open Icon – Opens the File Open dialog.



Save As Icon – Saves the current view of the active dataset.



Save Movie Icon – Opens the Save As *.AVI dialog.



Close Dataset Icon – Saves the current dataset.



Save Current View Icon – Saves the current active view.



Data Manager Icon - Opens the Data Manager Dialog.



Operation Status Icon – Opens the Operation Status Dialog.



Batch Viewer Icon - Opens the Batch Viewer Dialog if it is not already opened.



Maximum Intensity Icon - Displays the active dataset in the Maximum Intensity view.



Minimum Intensity Icon - Displays the active dataset in the Minimum Intensity view.



Sum Projection Icon - Displays the active dataset in the Sum Projection view.



Slice View Icon - Displays the active dataset in the Slice View.



XY Icon - Displays the active dataset in the XY view.



XZ Icon - Displays the active dataset in the XZ view.



YZ Icon - Displays the active dataset in the YZ view.



XYZ Icon - Displays the active dataset in the XYZ view.



Copy Current View Icon – Copies the active dataset view to a new workspace.



Cropping and Reshaping Icon – Opens the Cropping and Reshaping Dialog.



Extend Slices Icon – Opens the Extend Slices Dialog.



Resize Image Icon – Opens the Resize Image Dialog.



Background Equalization Icon – Opens the Background Equalization Dialog.



Background Subtraction Icon – Opens the Background Subtraction Dialog.



Attenuation Correction Icon – Opens the Attenuation Correction Dialog.



Optical Density Correction Icon – Opens the Optical Density Correction Dialog.



Slice to Slice Alignment Icon – Opens the Slice to Slice Alignment Dialog.



Channel to Channel Alignment Icon – Opens the Channel to Channel Alignment Dialog.



Image Algebra Icon – Opens the Image Algebra Dialog.



3D Deconvolution Icon – Opens the 3D Deconvolution Dialog.



2D Deconvolution Icon – Opens the 2D Deconvolution Dialog.



3D Inverse Filter Icon – Opens the 3D Inverse Filter Dialog.



No Neighbor/Nearest Neighbor Icon – Opens the No Neighbor/Nearest Neighbor Dialog.



5D Viewer Icon – Opens the 5D Viewer and the Properties Form Dialog that controls the 5D Viewer display.



Image Statistics Icon – Opens the Image Statistics Dialog.



Line Profile Icon – Opens the Line Profile Dialog.



Count/Track Icon – Opens the Counting and Tracking Dialog.



FRET Cross Talk Correction Icon - Opens the FRET Cross Talk Correction Dialog.



FRET Efficiency Calculation Icon - Opens the FRET Efficiency Calculation Dialog.



Colocalization Icon - Opens the Colocalization Dialog.



Radiometrics Icon – Opens the Radiometrics Analysis Dialog.

Getting Help

If you have a problem or question about this product, please contact Media Cybernetics Technical Support. Our contact information appears in the About dialog box, as shown here:

